

Holding with a Zimmer Clamp or Brake

Zimmer Clamps and Brakes for linear guide rails are designed for **STATIC** holding applications **ONLY**. Contact surfaces are designed to interface with “free” surfaces on the rail (i.e. vertical surfaces not being used by bearing carriages).

The shape and contact points are based on the geometry and properties of each linear rail.

Applications:

- Maintaining position of linear axis
- Securing of vertical axis
- Positioning of lifting devices
- Clamping of machine tables
- Clamping in case of pressure drop
- Clamping machine components after shut down

Stopping with a Zimmer Brake

Zimmer Brakes are used primarily as static holding clamps, but with e-stop braking capability for a limited amount of cycles. Contact surface are made from a specially formulated brake material similar to automotive brake pads. They are specifically designed to effectively decelerate without causing wear to the linear rail. Ideally suited to prevent unintended gravity fall of machine motions, compliment an existing system or activate in the event of a complete power failure.

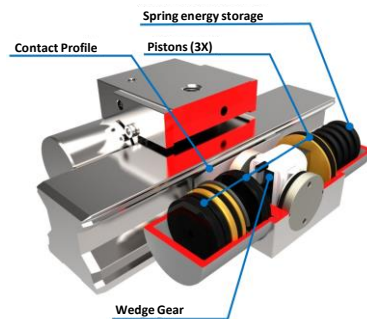
Advantages:

- Small size envelope with very high holding forces
- Very fast reaction times
- Available end seals and adapter plates
- High rigidity
- No relative movement of axis

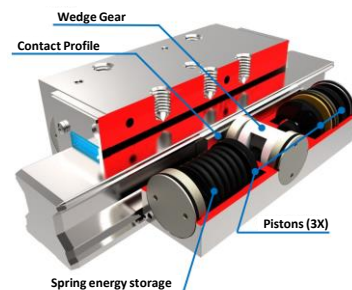
Zimmer Clamps

Manual			Pneumatic								Hydraulic	Electric
HK	miniHK	HKR	MK	MKS	LKP	LKPS	MCP	MCPS	MKR	MKRS	KWH	LKE
			NO	NC	NO	NC	NO	NC	NO	NC	NO	N
<ul style="list-style-type: none"> •Economical •Compact design •Adjustable Handle or Knurled knob 			<ul style="list-style-type: none"> •Compact Design •Precise Positioning •Quick Response •PLUS Connection 		<ul style="list-style-type: none"> •Low profile narrow design •Built-in slot for sensors •Tubeless connection from above 		<ul style="list-style-type: none"> •For small profile rails •Floating Housing •Matches Bearing Block on one side 		<ul style="list-style-type: none"> •Compact Design •Precise Positioning •Quick Response •PLUS Connection 		<ul style="list-style-type: none"> •High holding forces •Very rigid housing 	<ul style="list-style-type: none"> •Integrated sensors •Self-locking •Integrated controls •IP64
15mm-65mm	5mm-15mm	Ø12mm-60mm	12mm-85mm	12mm-85mm	15mm-55mm	15mm-25mm	9mm-20mm	9mm-25mm	Ø12mm-60mm	Ø12mm-60mm	25mm-125mm	15mm-35mm
Up to 2000N	Up to 220N	Up to 2000N	Up to 2250N	Up to 1450N	Up to 5400N	Up to 3600N	Up to 550N	Up to 400N	Up to 1850N	Up to 1650N	Up to 46,000N	Up to 1800N

Zimmer Clamp



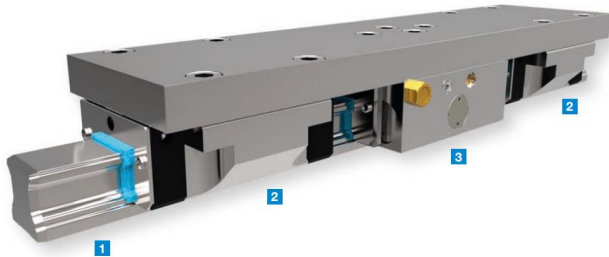
Zimmer Brake



Zimmer Brakes

Pneumatic				Hydraulic	
MBPS	UBPS	LBPS	RBPS	KBH	LBHS
NC	NC	NC	NC	NO	NC
<ul style="list-style-type: none"> •Precise Positioning •Quick Response •Precise Positioning •PLUS Connection (on UBPS) 		<ul style="list-style-type: none"> •Low profile •Built-in sensor slot •Tubeless connection 	<ul style="list-style-type: none"> •Extremely high holding forces •Built-in sensor slot 	<ul style="list-style-type: none"> •High holding forces •Rigid housing •No mechanical components – spring force from housing deflection (LBHS) 	
15mm-65mm	15mm-65mm	15mm-55mm	Ø5mm – 60mm	25mm-125mm	20mm-65mm
Up to 4700N	Up to 9200N	Up to 3600N	Up to 52,000N	Up to 46,000N	Up to 15,000N

Installation Example



1. Rail manufacturer's linear guide
2. Rail manufacturer's carriage
3. Zimmer clamp

LKE Electric Zimmer Clamp



- Securing of patient bed
- No pneumatic supply required
- Can be unlocked manually in case of power failure



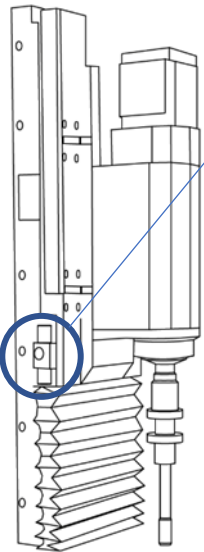
- On AGV to prevent payload shifting during transit

Online Product Finder

- Easily find the correct Zimmer clamp for your rail/carriage application
- Quick, accurate, convenient

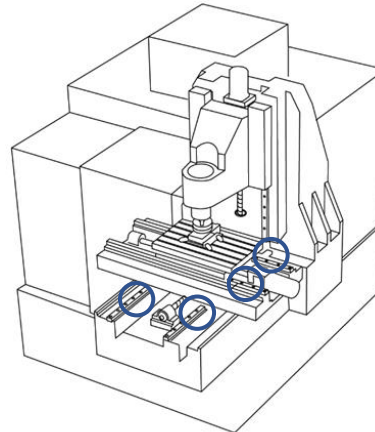


Vertical Application Example



- Securing Z-axis in the event of power loss
- Machine safety in e-stop situations
- Very fast reaction times for quick deceleration
- MBPS, UBPS, and RBPS brakes are typically used

Horizontal Application Example



- Securing of linear axis
- Higher accuracy
- Reduce vibrations during process
- Prevent axis movement during transport
- MK and MKS series are the most popular Zimmer clamps for machine tables

Your authorized Zimmer Clamp and Brake Distributor:

Zimmer Clamps and Brakes are precision manufactured for most major guide rail types and brands